

Innovation

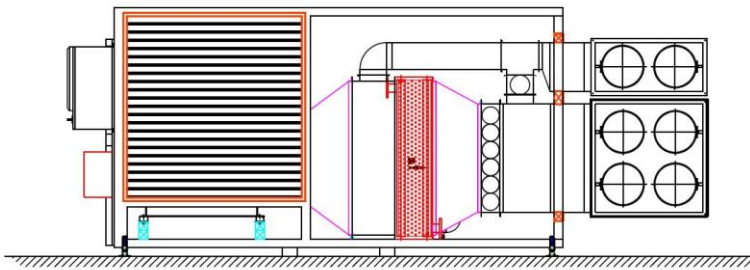
L-ENZ with heat exchanger bypass

The dryer for 75 kW biogas plants

Equipped with a heat exchanger bypass, a L-ENZ dryer can

- ➔ simultaneously dry 20 to 30 round hay bales
- ➔ simultaneously dry approx. 25 tons of corn/maize

in approx. 1.5 days.



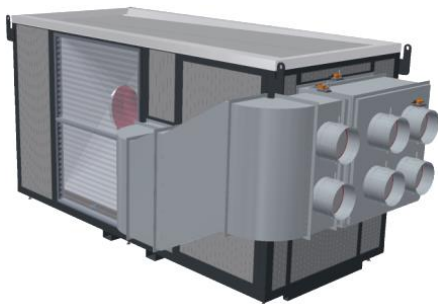
L-ENZ 150 for ventilation of small drying bays

The dryer for biogas plants with multiple CHPs and flexible operating plans and therefore highly varying heat surplus

Example:

1x CHP with 500 kW el. and 475kW el. plant's rated power as well as 1x CHP with 500 kW el. generate up to ca. 1.000 kW of thermal power in part-time operation.

Equipped with a heat exchanger bypass and 3-way mixing valve, a stepless heat utilisation in a wide heat range between approx. 150 and 1.000 kW is possible.



L-ENZ 800 for ventilation of large drying bays